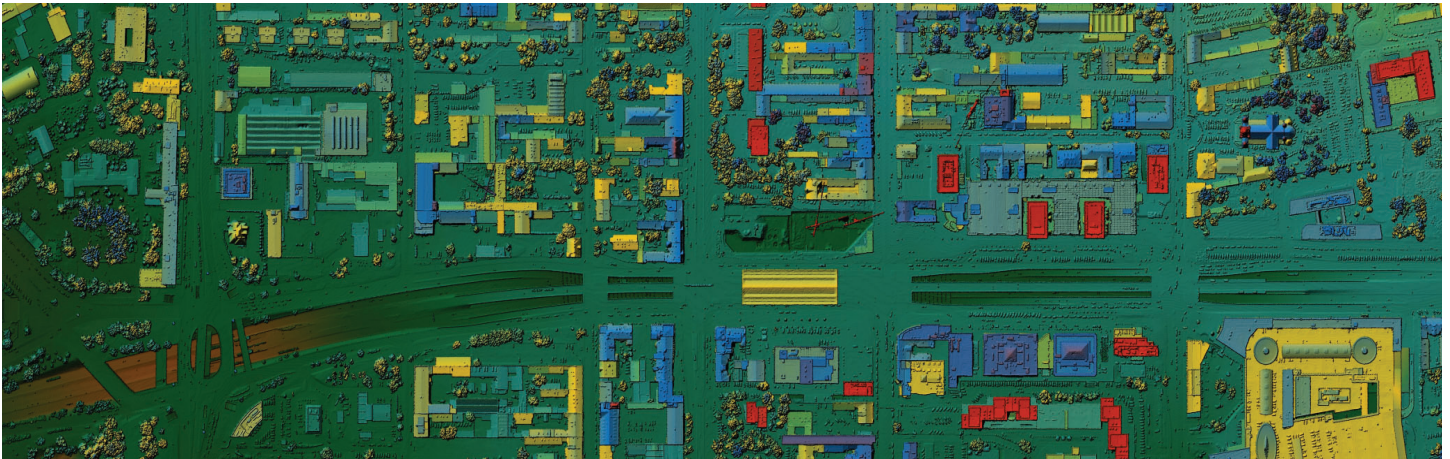


CAPABILITIES

Aerial Services is a geospatial company that provides cutting-edge GIS services with aerial LiDAR and orthoimagery for mapping. Our team of experts utilizes advanced technology to provide accurate, detailed, and comprehensive mapping solutions for a variety of industries. We are committed to delivering high-quality services that meet and exceed the expectations of our clients.



SERVICES

ASI works on data conversions and prepares electronic maps with the help of GIS technology after utilizing the collected data. Our expertise allows us to integrate GIS services along with CAD services with the use of excellent GIS mapping and high-end GIS data conversions software. With the help of these services our customers can prepare spatial maps, atlas maps, contour maps, thematic maps, cadastral maps, landscape maps, zonal maps, and environmental maps.

- Identify Problems
- Monitor Change
- Manage and Respond to Events
- Perform Forecasting
- Set Priorities
- Understand Trends

EXPERIENCE

We work with a diverse range of clients, including government agencies, engineering firms, and environmental organizations. Our team has provided geospatial solutions for a variety of projects, including infrastructure planning, environmental monitoring, and disaster response.

INDUSTRIES SERVED

Federal State and Local Governments | Mining and Aggregate
| Transportation | Energy and Power | Renewables | Pre
Construction | Infrastructure | A&E Survey



AERIAL SERVICES



Geospatial Services Since 1967

Aerial Services, Inc. (ASI) is a veteran-owned small business passionate about delivering high quality geospatial solutions to meet our client's needs. ASI offers aerial acquisition and turn-key solutions for lidar, orthoimagery, obliques, and geo-tagged 4k video supporting a multitude of applications nationwide. Since 1967, ASI has been trusted to provide the critical geospatial data that enables informed decisions.

SERVICES

- Aerial Acquisition
- Corridor Solutions
- GIS
- UAS
- LiDAR
- Orthoimagery
- Planimetric and Topographic Mapping

MARKETS

- Electric Utilities
- Fiber Optic & Telecommunications
- Forestry & Natural Resources
- Government
- Mining, Quarries, Landfills
- Oil & Gas
- Renewable Energy
- Transportation
- Engineering (A&E)

AWARDS

- 9 time MAPPS Presidential Award Recipient
- 5 time MAPPS Geospatial Excellence Award Recipient
- MAPPS Geospatial **Project of the Year** Award Recipient

MISSION / VALUES

At ASI, we strive to be a company that is known for its Excellence, Integrity, and Humility. We are committed to providing our customers with the best possible products and services with **Accuracy, Speed, and Quality (ASQ)**. We believe our mission and core values are essential to our success and to the success of our customers.

- **Excellence** - We aim for excellence in everything we do, striving to consistently exceed expectations and deliver outstanding results.
- **Integrity** - We conduct ourselves with the utmost integrity, always doing what is right, even when it is difficult or inconvenient.
- **Humility** - We approach our work with a spirit of humility, recognizing that we are always learning and growing, and seeking to improve ourselves and our organization in every way possible.

JUST "ASQ" ASI

When it comes to the geospatial industry, there's a lot to know. But **YOU** don't have to be the expert - that's where ASQ Aerial Services comes in. With our years of experience and our commitment to excellence, we're the resource you can count on for all your aerial mapping and surveying needs. Whether you're looking to get a job done quickly and efficiently, or you need detailed information about a specific project, just ASQ. We're always here to help