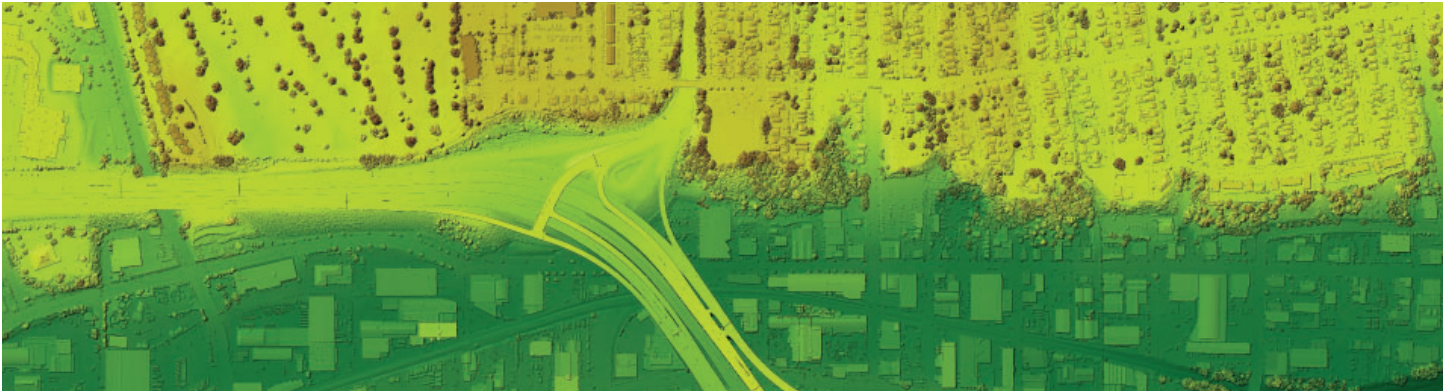


## CAPABILITIES

ASI specializes in the acquisition and processing of lidar data for a multitude of applications. With our fleet of aircraft and Riegl Lidar sensors, our geospatial professionals collect and process highly accurate elevation data for projects in a wide variety of land cover types nationwide from mountainous terrain to forests, crops, and other dense vegetation. Rigorous quality controls measures ensure all ASI lidar data consistently exceeds national mapping standards.



## QUALITY

Aerial Services quality control solutions set us apart from the competition. Our business philosophy requires continuous review and improvement of all business and production processes. For each project, quality control is built into the entire process with regular sensor calibration, detailed mission planning, thorough ground control, and a rigorous ground check point assessment of laser and photo accuracy. Through all phases of the project, ASI adheres to techniques and practices that ensure products meet or surpass industry standards and comply with our clients' specific project specifications. ASI's philosophy is to make sure their clients receive quality data with high utility.

## COMMON USES

- Terrain Analysis, DEM, DTM
- Transportation Planning
- Utility Design and Monitoring
- Volumetric Studies
- Obstruction Analysis
- 3D Modeling
- Municipal GIS
- Change Detection
- Land Use Mapping
- Forestry Mapping
- Floodplain Evaluation
- Urban Planning
- Watershed Analysis
- Airport Facilities Survey

## INDUSTRIES SERVED

Mining and Aggregate | Transportation | Energy and Power | Renewables | Pre-Construction |  
Infrastructure | A&E Survey

# AERIAL SERVICES



## Geospatial Services Since 1967

Aerial Services, Inc. (ASI) is a veteran-owned small business passionate about delivering high quality geospatial solutions to meet our client's needs. ASI offers aerial acquisition and turn-key solutions for lidar, orthoimagery, obliques, and geo-tagged 4k video supporting a multitude of applications nationwide. Since 1967, ASI has been trusted to provide the critical geospatial data that enables informed decisions.

### SERVICES

- Aerial Acquisition
- Corridor Solutions
- GIS
- UAS
- LiDAR
- Orthoimagery
- Planimetric and Topographic Mapping

### MARKETS

- Electric Utilities
- Fiber Optic & Telecommunications
- Forestry & Natural Resources
- Government
- Mining, Quarries, Landfills
- Oil & Gas
- Renewable Energy
- Transportation
- Engineering (A&E)

### AWARDS

- 9 time MAPPS Presidential Award Recipient
- 5 time MAPPS Geospatial Excellence Award Recipient
- MAPPS Geospatial **Project of the Year** Award Recipient

## MISSION / VALUES

At ASI, we strive to be a company that is known for its Excellence, Integrity, and Humility. We are committed to providing our customers with the best possible products and services with **Accuracy, Speed, and Quality (ASQ)**. We believe our mission and core values are essential to our success and to the success of our customers.

- **Excellence** - We aim for excellence in everything we do, striving to consistently exceed expectations and deliver outstanding results.
- **Integrity** - We conduct ourselves with the utmost integrity, always doing what is right, even when it is difficult or inconvenient.
- **Humility** - We approach our work with a spirit of humility, recognizing that we are always learning and growing, and seeking to improve ourselves and our organization in every way possible.

## JUST "ASQ" ASI

When it comes to the geospatial industry, there's a lot to know. But **YOU** don't have to be the expert - that's where ASQ Aerial Services comes in. With our years of experience and our commitment to excellence, we're the resource you can count on for all your aerial mapping and surveying needs. Whether you're looking to get a job done quickly and efficiently, or you need detailed information about a specific project, just ASQ. We're always here to help